

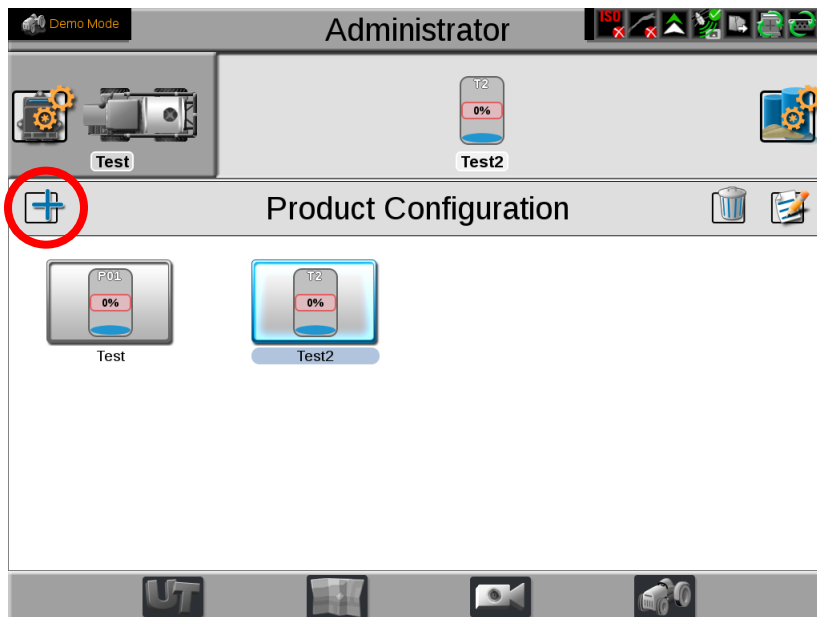
Creating A New Product Configuration on a Raven Viper 4

****Note, the following examples are created using Viper 4 software version 2.7.1.12. Some features may not be available or appear differently on other software versions****

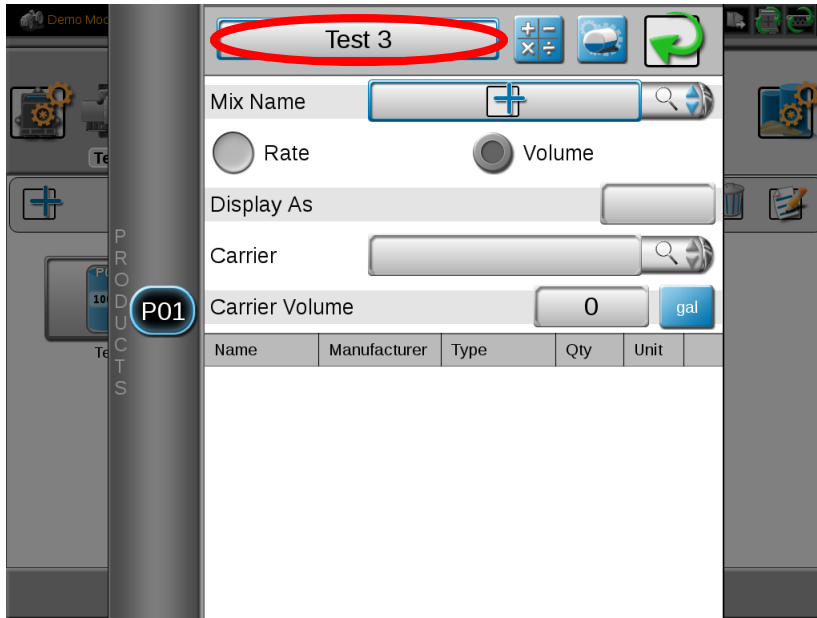
- 1) From anywhere on the home screen, select the “Product Configuration” tab



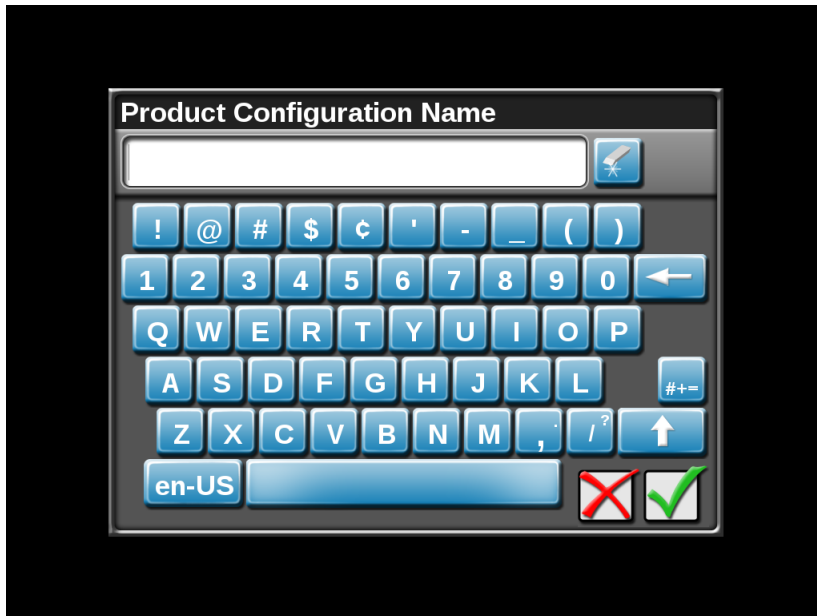
- 2) From the “Product Configuration” tab, select the + button



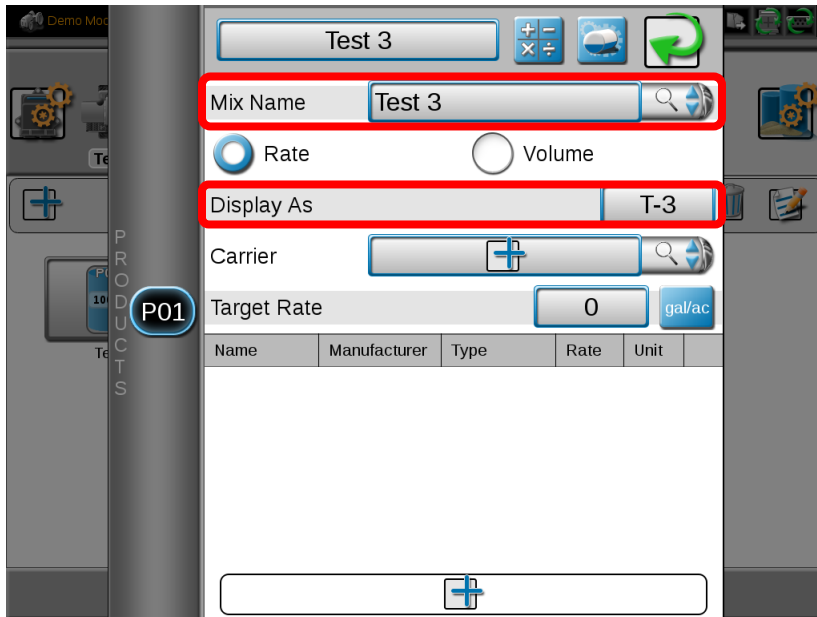
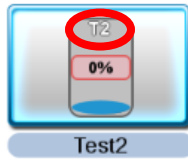
3) Select the top box and give your product configuration a name



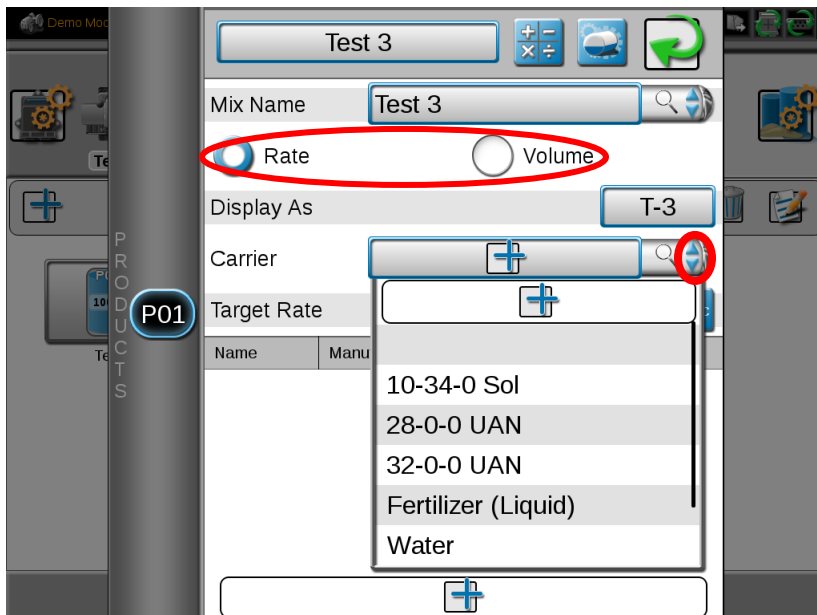
4)



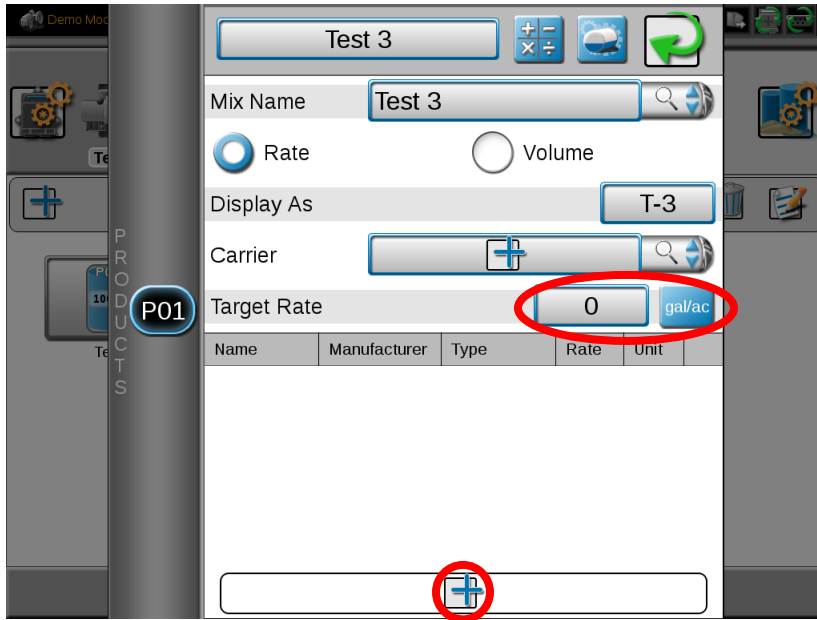
5) Enter a mix name and a display name. The display name is what will show here:



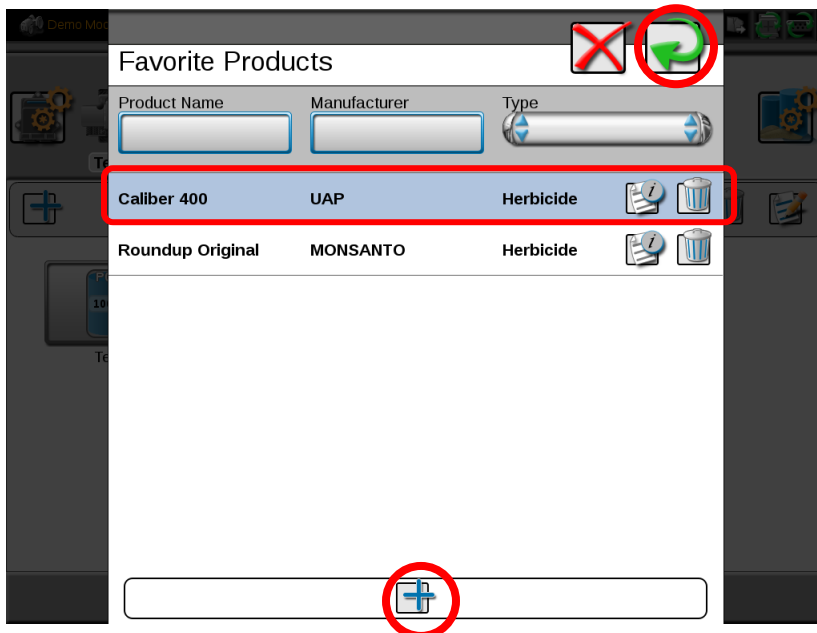
6) Select the drop-down arrows next to the carrier. If you see the carrier you want, select it. If it is not listed, press the + button to add it. *Also, note the Volume and Rate buttons. This will determine whether you create your product mix based off of rate per acre or volume per tank/batch/field. **I prefer to use the Rate setting**



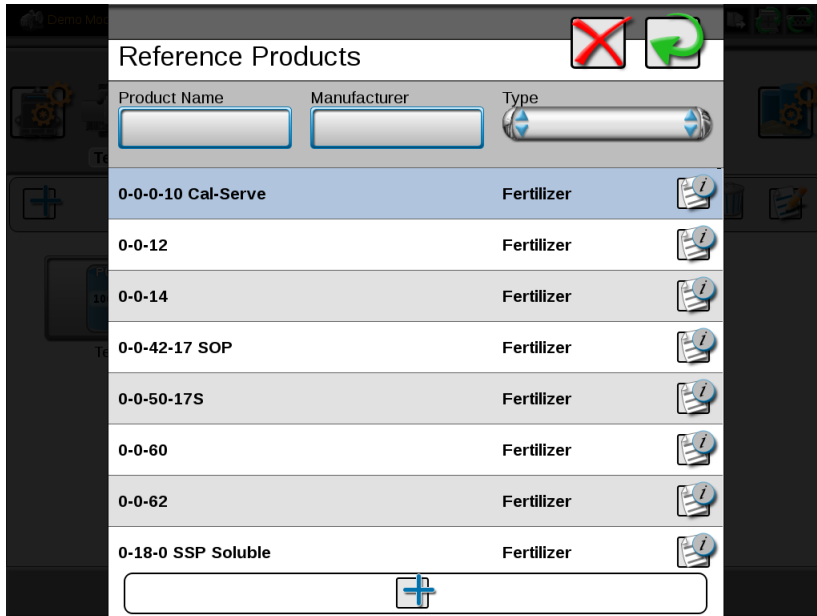
- 7) Enter your target rate and select the units in which you want to apply it – gal/ac, pt/ac, oz/ac. You can toggle through them by tapping the blue box. Next you will select the + button at the bottom of the screen to start adding products to the mix.



- 8) If you have already used products in the past, they will show in the list already. Just tap one to highlight it blue and then tap the back button to add it to the mix. If the product you need is not in the list, tap the + button at the bottom of the screen.



9) To select a product from the pre-populated list, just tap on it to highlight it blue and press the back button. The boxes at the top of the screen are for filtering the list to help you find a product. If the product you need is not in the list, skip to step #13.



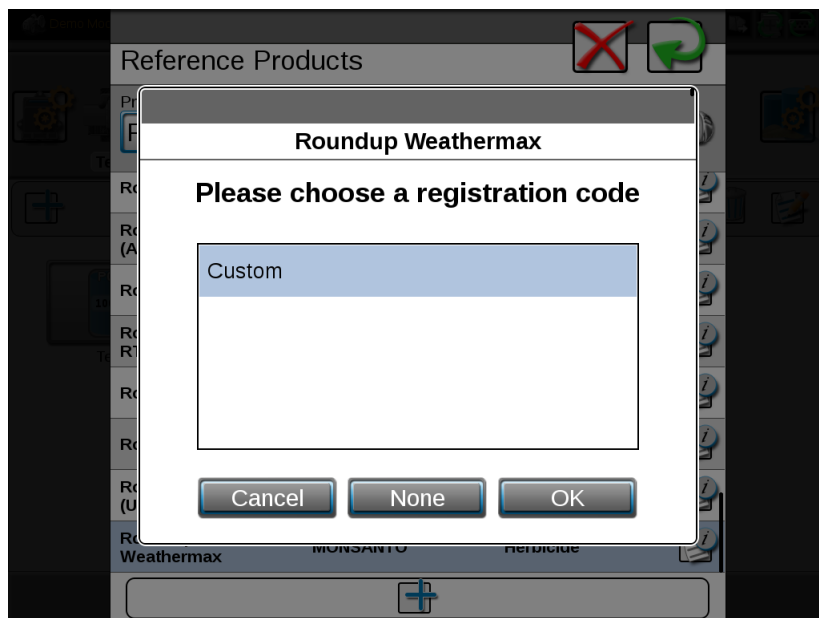
10) Example using the product name to filter



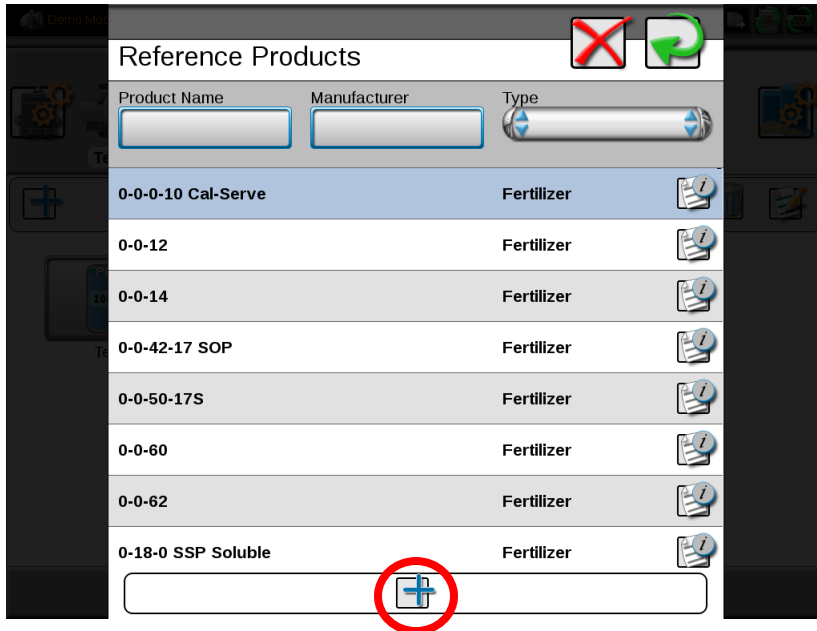
11) In this example, the list is narrowed down to all Roundup products. Again, highlight the one you need and press the back button to select it.



12) Once you select a product, you will be given the option to either select a pre-populated registration code(EPA number) if there is one available, select custom to enter your own number, or select "None" to skip this step.



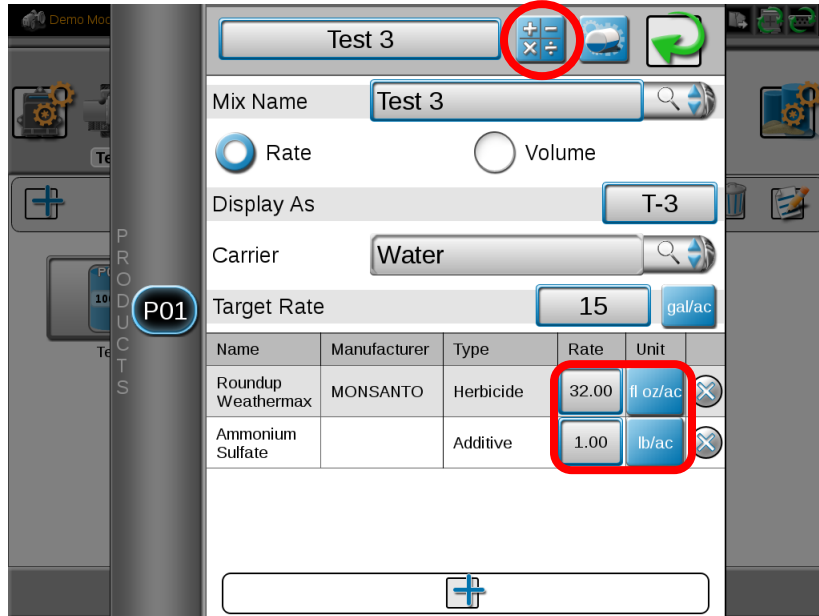
13) If the product you are adding is not in the list, you can select the + button at the bottom of the page to add your own.



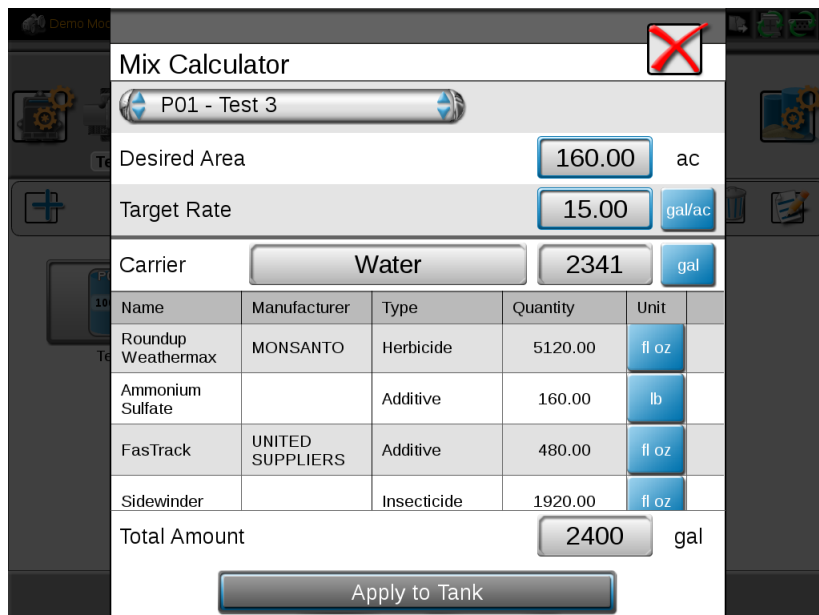
14) In this page, you will select the product type, give it a name, select whether it is liquid or dry and finally the units in which you want to apply it. In this example, I am creating an insecticide named Sidewinder, it is a liquid and I want to apply it in fluid ounces. When done, press the back button to complete.



15) Once all of your products are added to your mix, you will need to enter the rates in which you want to apply each product. You can also press the blue button next to each rate box to change the unit of measure. (Example – I am applying 2,-D and I want to switch from ounces per acre to pints.) After you have your rates entered, there is also a built-in tank mix calculator. To access that, select the calculator button at the top of the page.



16) All you need to do is enter the number of acres you want to cover and your target rate. In this example I am doing a batch mix so I can mix a truck load for the entire field.



17) I can now tap on the units button next to each quantity to convert it to a different unit of measure. In this example I can now see that I need 40 gallons of Roundup, rather than 5120 ounces. Very handy little feature!

Mix Calculator

P01 - Test 3

Desired Area: 160.00 ac

Target Rate: 15.00 gal/ac

Carrier: Water 2341 gal

Name	Manufacturer	Type	Quantity	Unit
Roundup Weathermax	MONSANTO	Herbicide	40.00	gal
Ammonium Sulfate		Additive	160.00	lb
FasTrack	UNITED SUPPLIERS	Additive	480.00	fl oz
Sidewinder		Insecticide	1920.00	fl oz

Total Amount: 2400 gal

Apply to Tank

18) Here is a fully converted mix. **Note, if this was a single tank mix(quantity equal to or less than your tank capacity), I could press the "Apply to Tank" button at the bottom to automatically set my tank level to whatever value is shown in the "Total Amount" box.

Mix Calculator

P01 - Test 3

Desired Area: 160.00 ac

Target Rate: 15.00 gal/ac

Carrier: Water 2341 gal

Name	Manufacturer	Type	Quantity	Unit
Roundup Weathermax	MONSANTO	Herbicide	40.00	gal
Ammonium Sulfate		Additive	160.00	lb
FasTrack	UNITED SUPPLIERS	Additive	3.75	gal
Sidewinder		Insecticide	15.00	gal

Total Amount: 2400 gal

Apply to Tank